

# Spartan RAN

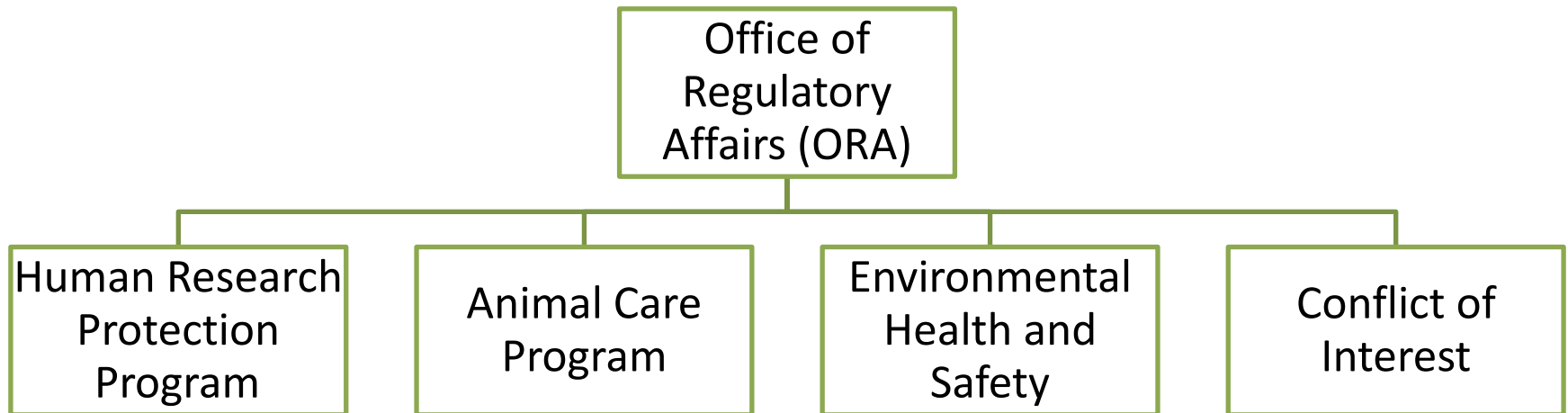
Kristen Burt

Office of Regulatory Affairs

April 23, 2015

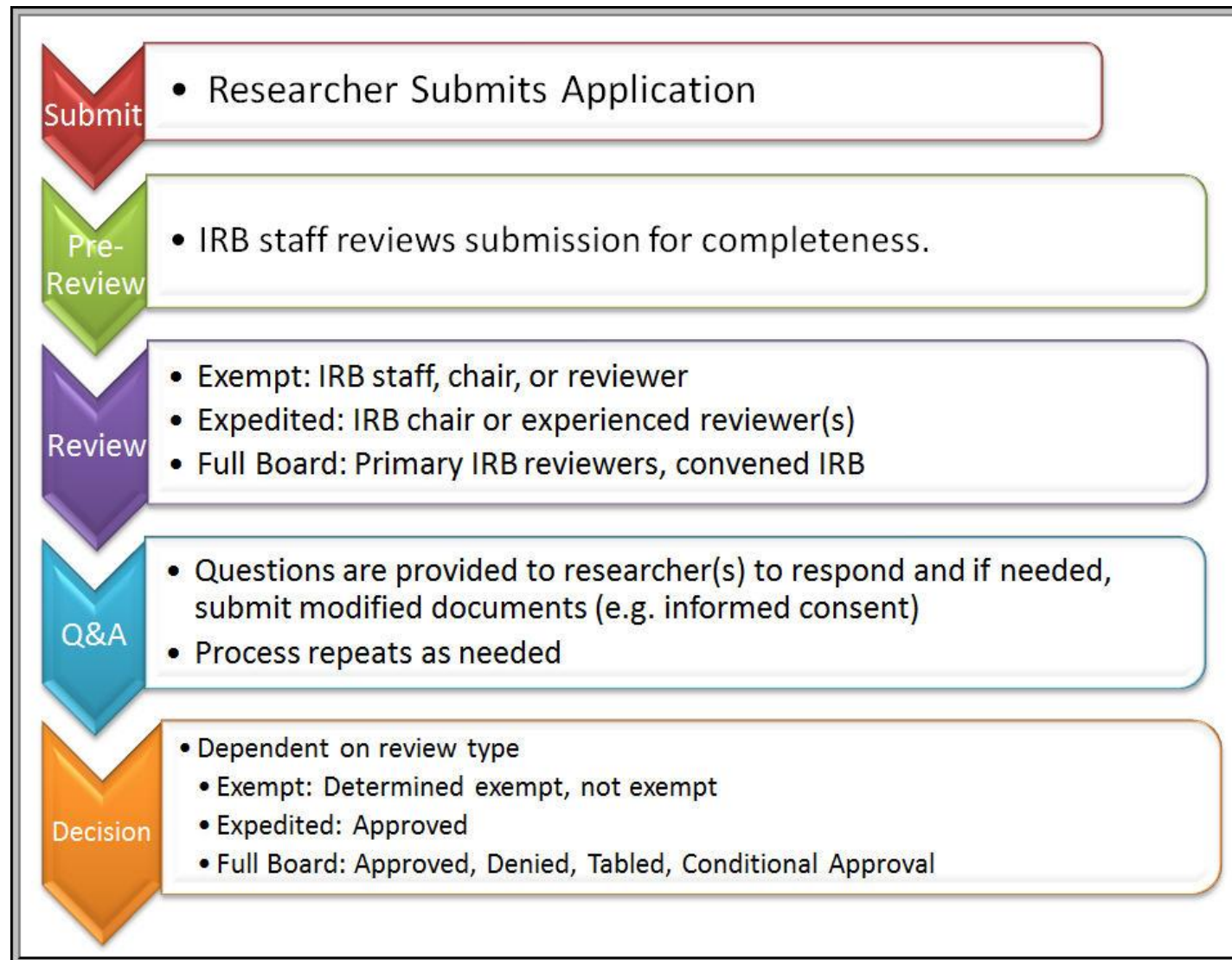


# Office of Regulatory Affairs



# Human Research Protection Program





## Exempt

- If involvement of human subjects will only be in one or more of the *exempt categories*, research activities are exempt from the regulations
- Reviewed and determination made by IRB staff and/or IRB chair

## Expedited

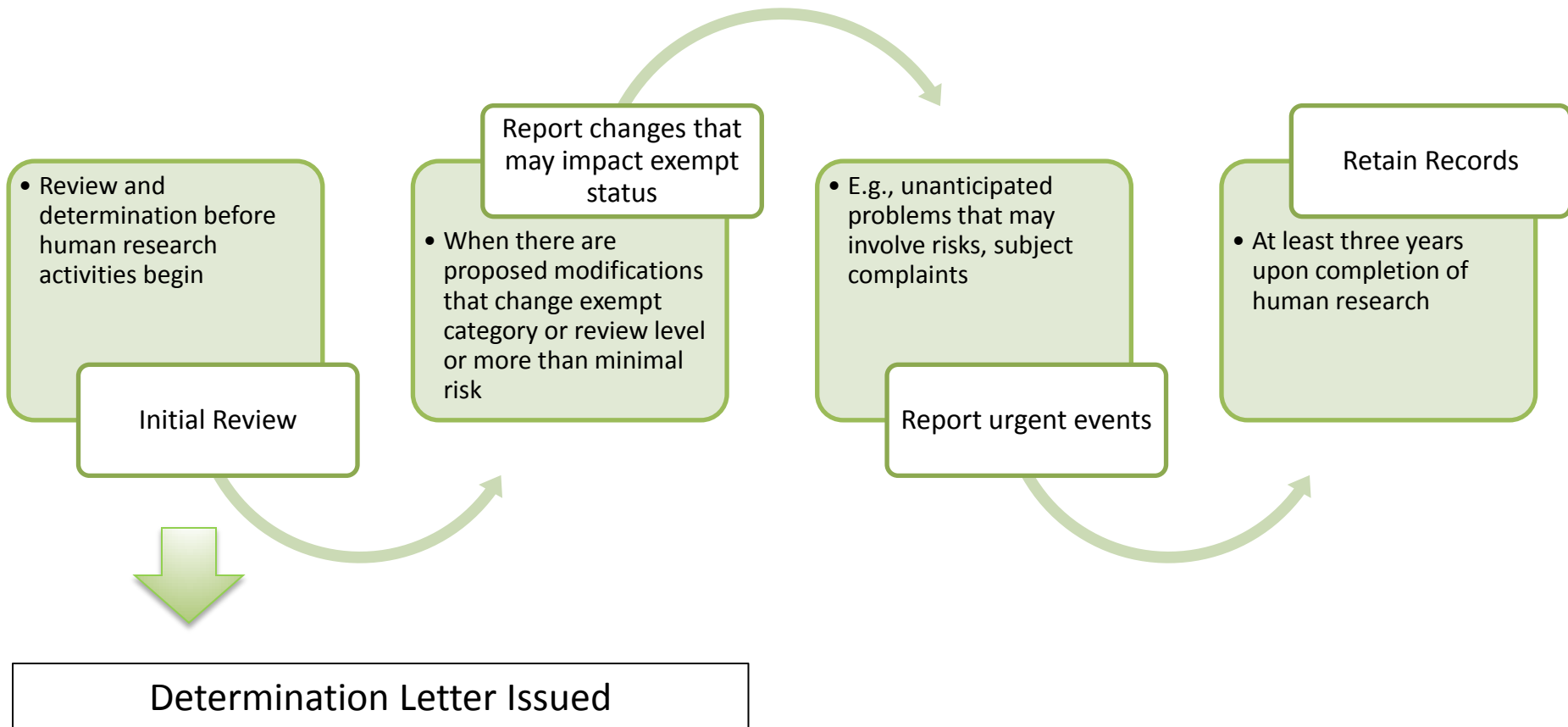
- If research study meets one or more of the *expedited categories* and is *no more than minimal risk*, the project can undergo expedited review
- \*\* Regulations for the protection of human subjects apply
- Project does not need to be reviewed and approved by a convened IRB
- Reviewed and approved by IRB chair or by one or more experienced reviewers designated by the IRB chair

## Full Board

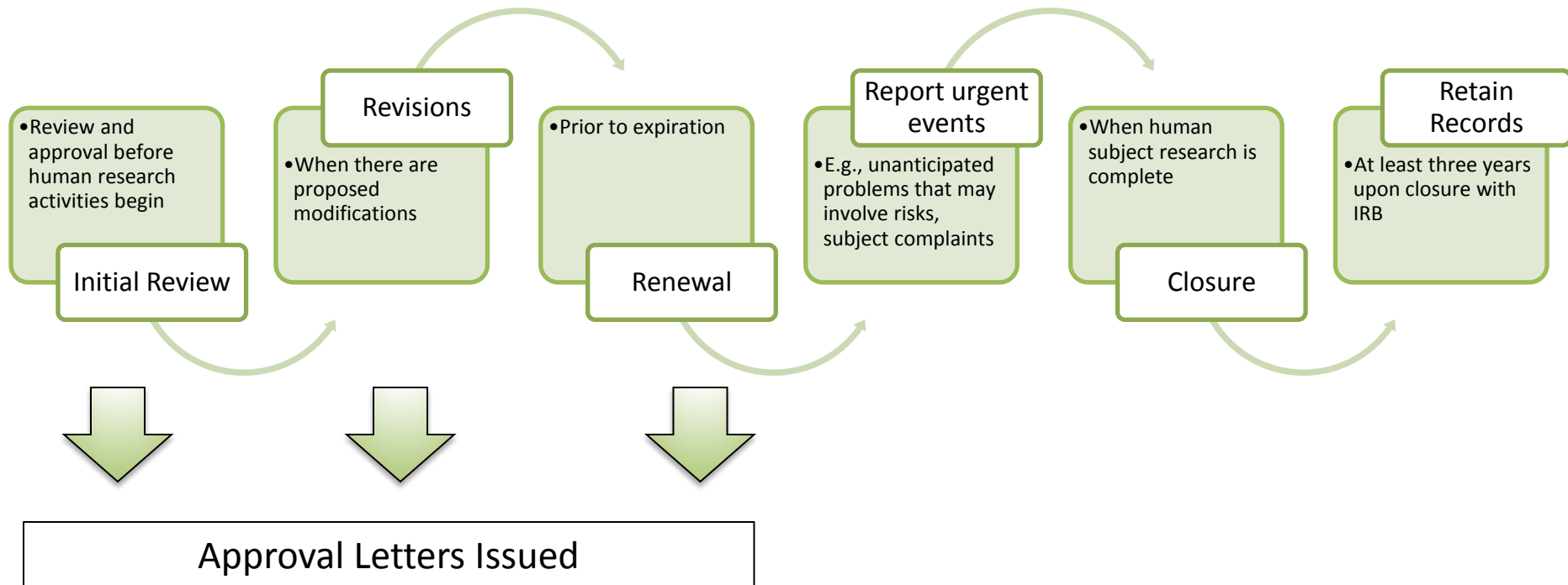
- More than minimal risk or research that does not fit into an expedited category
- \*\* Regulations for the protection of human subjects apply
- Reviewed and approved by convened IRB



# Exempt Life Cycle (Overview)



# Expedited or Full Board Life Cycle (Overview)



# New Investigator Resources

- Contact the IRB early
- Transfer of IRB projects
- Access to HRPP online system
- HRPP training
- HRPP website resources
  - “Getting Started”
  - Informed consent templates
  - Contacts





# Research Participant Payments

- Disbursement Vouchers
- Cash Advances (MSU Manual of Business Procedures, Section 61: Cash Advances: Travel and Research Participants)



# Questions?

## HRPP Office Location

- Olds Hall, 408 West Circle Drive, Room 207, East Lansing, MI 48824
- Monday - Friday, 8:00 A.M. - 5:00 P.M. (office hours)

## Phone

- 517-355-2180

## Fax

- 517-432-4503

## Email

- [irb@ora.msu.edu](mailto:irb@ora.msu.edu) (IRB project specific questions, website or training suggestions, FAQs, presentations)
- [irbdocs@ora.msu.edu](mailto:irbdocs@ora.msu.edu) (IRB application and attachment submissions)
- [hrl@ora.msu.edu](mailto:hrl@ora.msu.edu) (email contact for HRL office)
- [crbc@ora.msu.edu](mailto:crbc@ora.msu.edu) (email contact for Clinical Research Billing Compliance)

## Website

- [hrpp.msu.edu](http://hrpp.msu.edu)

